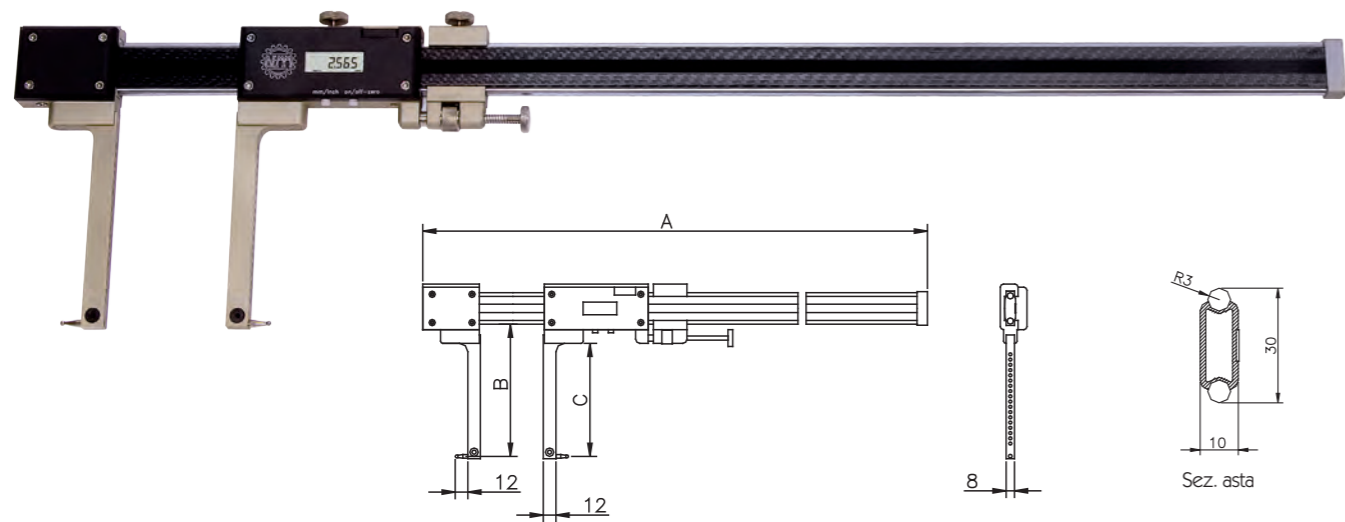


DIGI NETTUNO P

Calibro in fibra di carbonio per gole profonde con precarica interno/esterno
 Light sliding gauge in carbon fiber for deep grooves with spring system for I/O measurement

- Calibro a corsoio per gole interne/esterne
- Corpo in fibra di carbonio
- Elettronica RS 232 mm/inc water resistant
- Puntali intercambiabili
- Di serie coppia terminali sferici Ø 3
- Confezione: scatola in legno
- Digital sliding gauge for internal/external grooves
- In carbon fiber
- Electronic RS232 mm/inc data output, water resistant
- Interchangeable accessories
- Supplied with interchangeable rods with gauged balls Ø 3
- Delivery in wooden case



Article	Range	A	B	C	Resolution	Accuracy	Code	Kg
DIGI NETTUNO 400/125	I 48-448	610	-	107	0,01	0,03	09000	1,000
	E 0-376	610	125	-	0,01	0,03		
DIGI NETTUNO 400/150	I 48-448	610	-	132	0,01	0,03	09001	1,020
	E 0-376	610	150	-	0,01	0,03		
DIGI NETTUNO 600/125	I 48-648	810	-	107	0,01	0,03	09003	1,150
	E 0-576	810	125	-	0,01	0,03		
DIGI NETTUNO 600/150	I 48-648	810	-	132	0,01	0,03	09004	1,170
	E 0-576	810	150	-	0,01	0,03		
DIGI NETTUNO 800/125	I 48-848	1010	-	107	0,01	0,03	09006	1,280
	E 0-776	1010	125	-	0,01	0,03		
DIGI NETTUNO 800/150	I 48-848	1010	-	132	0,01	0,03	09007	1,300
	E 0-776	1010	150	-	0,01	0,03		

Per i Terminali intercambiabili vedere a pag.104-105 For interchangeable ends see pag.104 - 105

CARBO CIRCE

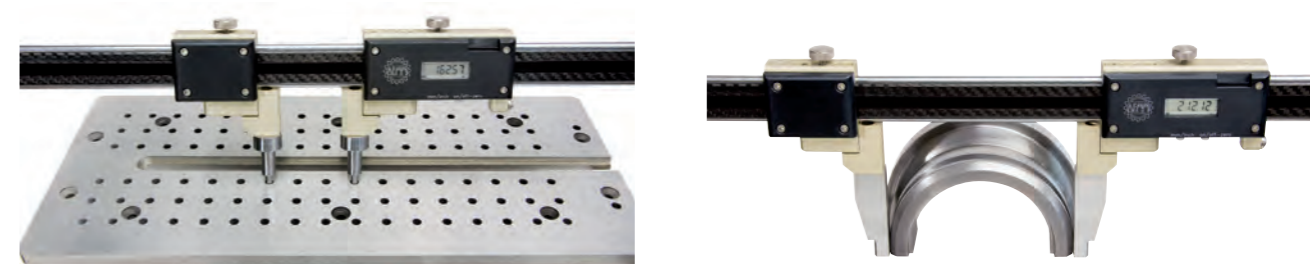
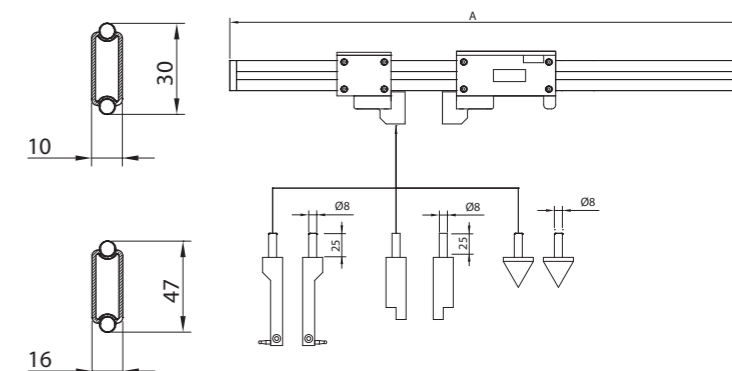
Calibro multifunzione a doppio corsoio mobile
 Digital multifunctional caliper double sliding gauge

- Calibro a doppio corsoio mobile
- Corpo in fibra di carbonio
- Elettronica RS 232 mm/inc water resistant
- Puntali intercambiabili
- Accessorio TS 81660 di serie
- Confezione: scatola in legno
- Double sliding gauge movable
- In carbon fiber
- Electronic RS232 mm/inc data output, water resistant
- Interchangeable accessories
- Standard contacts TS 81660
- Delivery in wooden case



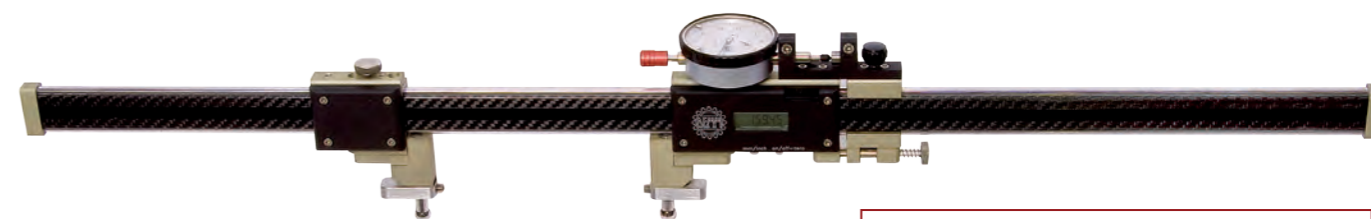
Article	A	Res.	Code	Kg
CARBO CIRCE 400	610	0,01	03001	0,750
CARBO CIRCE 600	810	0,01	03002	0,900
CARBO CIRCE 800	1010	0,01	90069	1,050
CARBO CIRCE 1000	1210	0,01	90070	1,200

Article	A	Res.	Code	Kg
CARBO CIRCE 1500	1800	0,01	90072	3,000
CARBO CIRCE 2000	2300	0,01	90073	3,400
CARBO CIRCE 2500	2800	0,01	90074	3,800
CARBO CIRCE 3000	3300	0,01	90075	4,250
CARBO CIRCE 3500	3800	0,01	90076	4,650



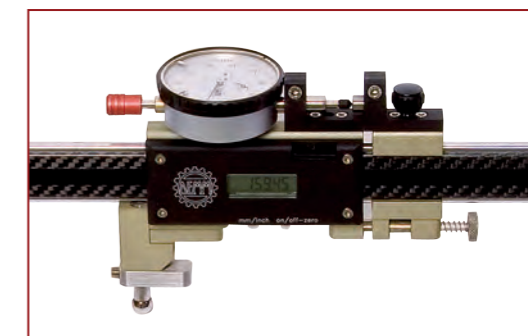
DIGI CIRCE P

Calibro in fibra di carbonio doppio cursore mobile a precarica I/E con comparatore
 Digital multifunctional caliper double sliding gauge with spring system and dial gauge



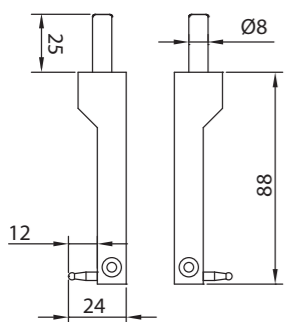
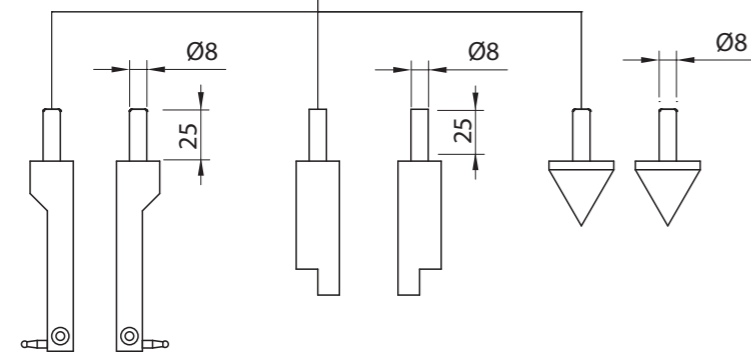
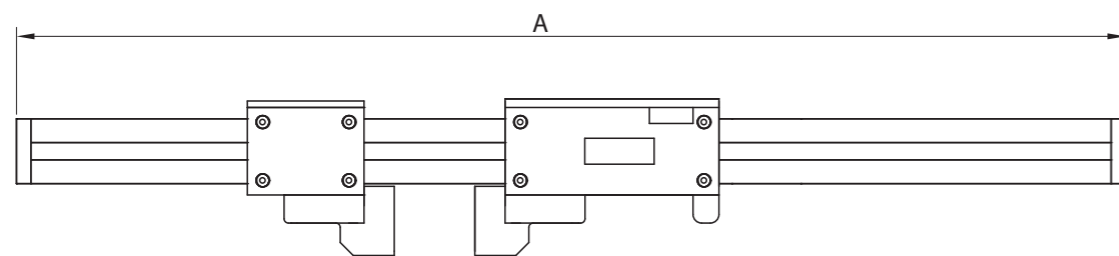
Scorrimento corsoio su cuscinetti
 Sliding ball bearing

Article	Range	Code	Kg
DIGI CIRCE P 400	400	03006	0,950
DIGI CIRCE P 600	600	03007	1,100
DIGI CIRCE P 1000	1000	03008	1,700

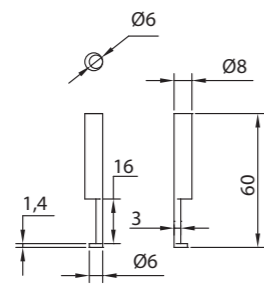


ACCESSORI

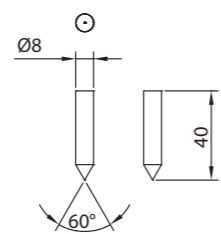
Accessori opzionali per Platon - Digiplaton - Carbo Circe - Digi Circe - Pulsar
 Optional accessories for Platon - Digiplaton - Carbo Circe - Digi Circe - Pulsar



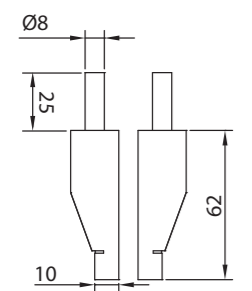
Article	Code	Kg
UL	00220	0,165



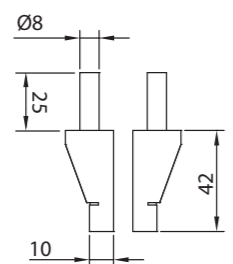
Article	Code	Kg
TP8104031	00293	0,080



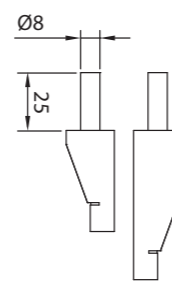
Article	Code	Kg
T60840	00296	0,070



Article	Code	Kg
FEM	00222	0,175



Article	Code	Kg
FEC	00223	0,115

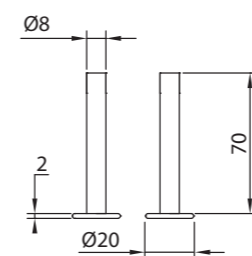


Article	Code	Kg
FES	00224	0,150

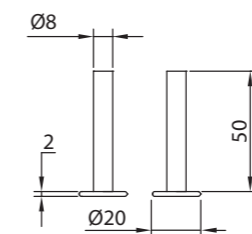


ACCESSORI

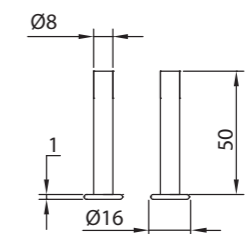
Accessori opzionali per Platon - Digiplaton - Carbo Circe - Digi Circe - Pulsar
 Optional accessories for Platon - Digiplaton - Carbo Circe - Digi Circe - Pulsar



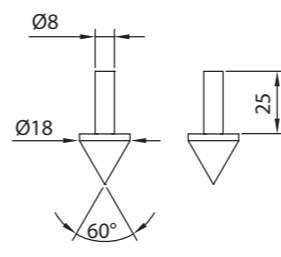
Article	Code	Kg
TS81570	60020	0,090



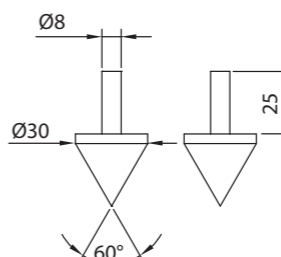
Article	Code	Kg
TS81660	00271	0,070



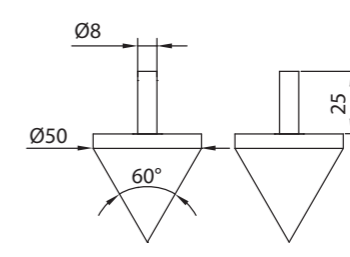
Article	Code	Kg
TS81640	00272	0,070



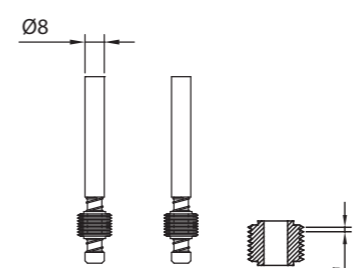
Article	Code	Kg
CN18	60010	0,052



Article	Code	Kg
CN30	00225	0,165

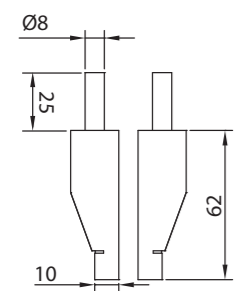


Article	Code	Kg
CN50	60015	0,600

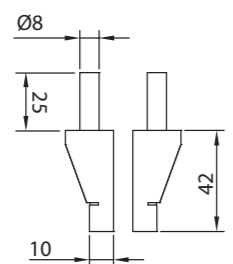


Article	Code	Kg
TZ...	vedi tabella	0,070

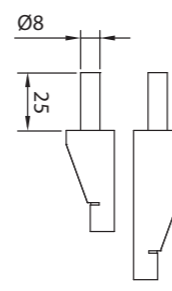
Article	D	P	Code	Kg
TZ08	14	0,8	00280	0,070
TZ1	14	1	00281	0,070
TZ125	14	1,25	00282	0,070
TZ15	14	1,5	00283	0,070
TZ2	14	2	00284	0,070
TZ25	14	2,5	00285	0,070
TZ3	14	3	00286	0,070
TZ4	20	4	00287	0,083
TZ5	20	5	00288	0,083
TZ6	20	6	00289	0,083



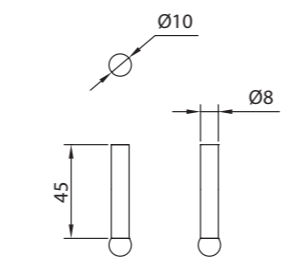
Article	Code	Kg
FEM	00222	0,175



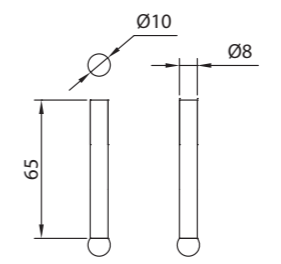
Article	Code	Kg
FEC	00223	0,115



Article	Code	Kg
FES	00224	0,150



Article	Code	Kg
TS81240	00298	0,080

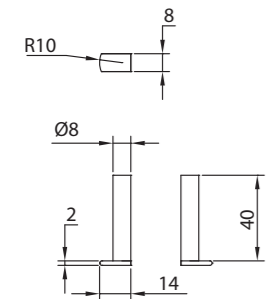


Article	Code	Kg
TS81260	00291	0,090

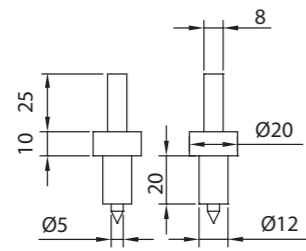


ACCESSORI

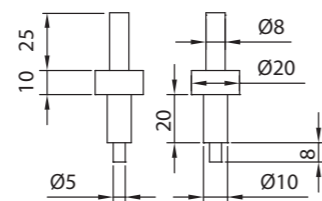
Accessori opzionali per Platon - Digiplaton - Carbo Circe - Digi Circe - Pulsar
 Optional accessories for Platon - Digiplaton - Carbo Circe - Digi Circe - Pulsar



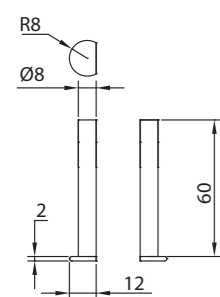
Article	Code	Kg
TM6840	00294	0,070



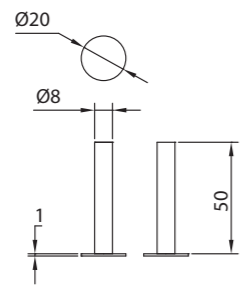
Article	Code	Kg
TR	00296	0,090



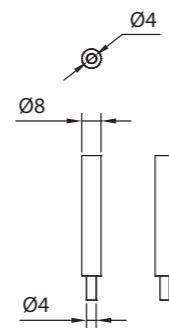
Article	Code	Kg
IE	00228	0,090



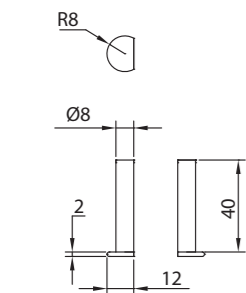
Article	Code	Kg
TP8161260	00292	0,090



Article	Code	Kg
TS81661	03005	0,080



Article	Code	Kg
FET	00273	0,050

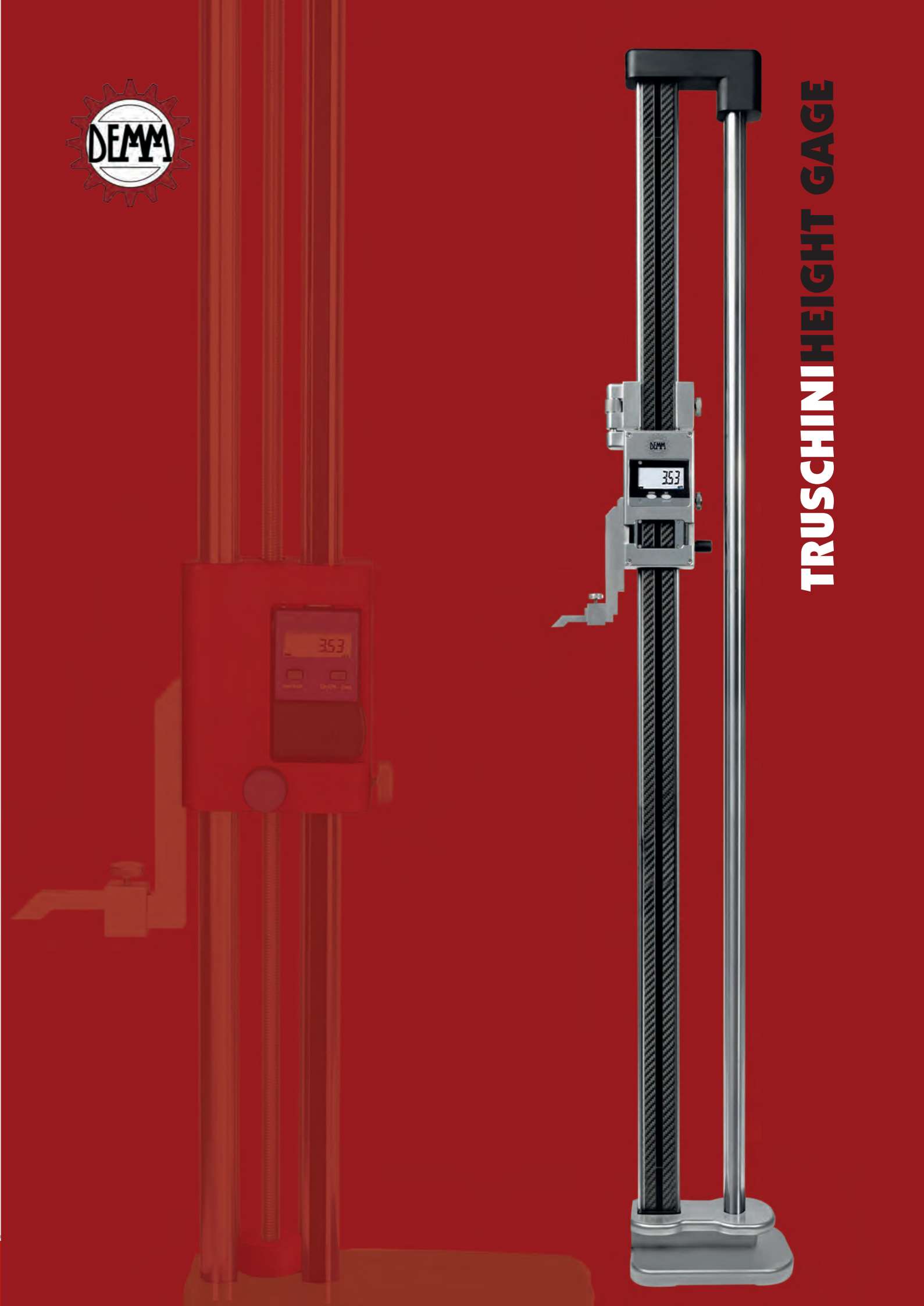


Article	Code	Kg
TP8161240	00290	0,070



Porta accessori
Support for accessories

Article	LxAxP	Code	Kg
PORTA ACCESSORI	150X25X100	00202	0,200



TRUSCHINI HEIGHT GAGE